

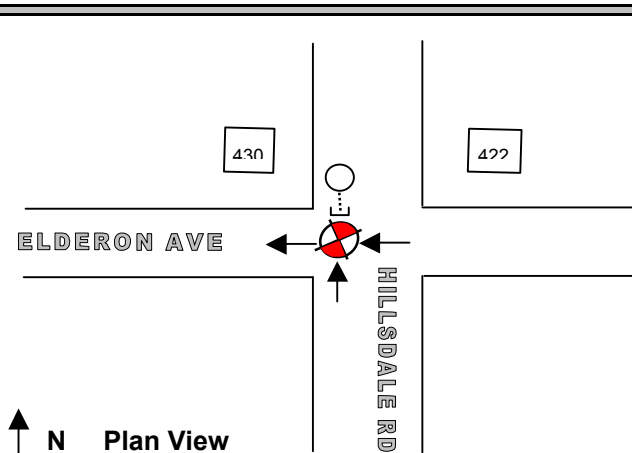
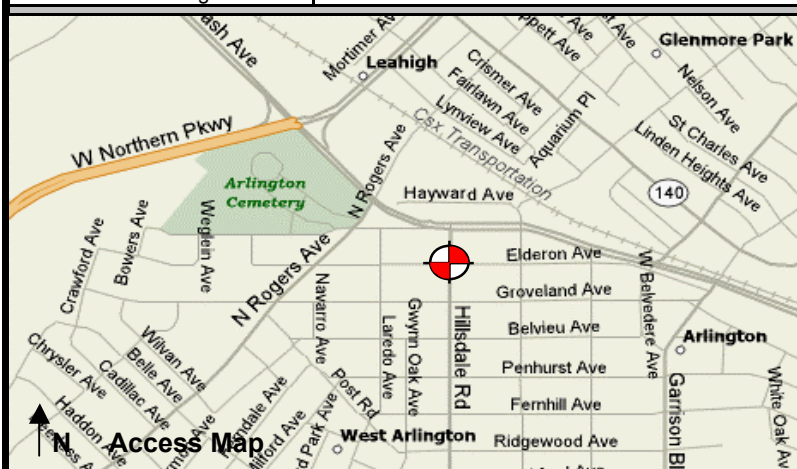
# Baltimore SSO

## Site Investigation Report

FM Initials: DF

Project: 13 Powder Mill System Improvements

Site Name:	13_29PS	Monitor Series:	4000 WR	Monitor S/N:		Manhole #:		<b>Investigation Information:</b> Upstream Input: (L/S, P/S) DNI Upstream Manhole: Downstream Manhole: Depth of Flow: 7" + - 0.5 Description of Site Hydraulics:
Address / Location:	4300 Elderon Avenue	Map Page #:		Map Grid #:				
		Pipe Height:	17.0"	Pipe Width:	17.0"			
Access:	Drive	IP Address:	CDPD					
		GPS Coords:	N DD.dddd		W DD.dddd			
Date/Time of Investigation:	5/24/2005 11:50							


**Manhole Information:**

Manhole Depth: 11.3'

Manhole Material / Condition:

COATED BRICK / GOOD

Active Drop Connections?

No

System Character:

- ☒ Residential  
☐ Commercial  
☐ Industrial

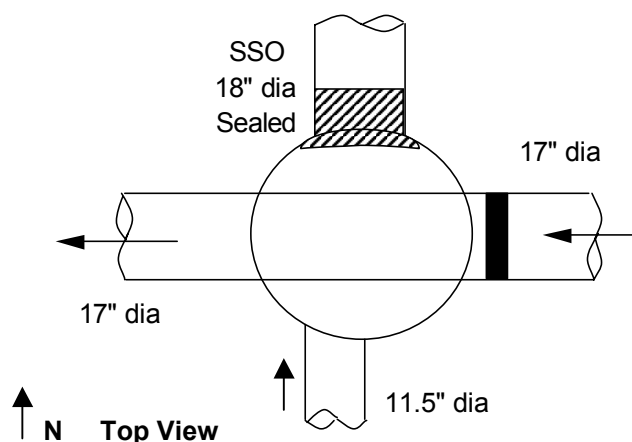
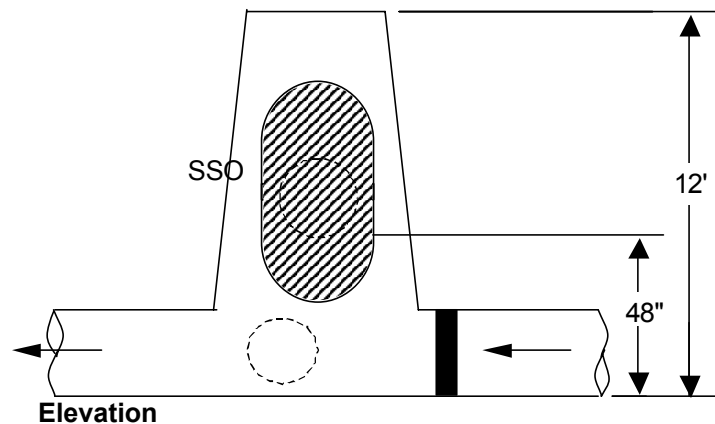
Notes:

Legend:

 Cast Iron Flap Valve

 Sensor Location

N.T.S.- Not to scale



The monitoring period ended as of November 30, 2006.